

1909



GREAT BRITISH DESIGN

SINCE

1909





*Range and colour*

Half Pencil & Scalloped painted in Charcoal, Partridge Grey & Chalk.











## TIMELESS CLASSIC & MODERN DESIGNS

The 1909 collection offers a versatile range of classic painted, in-frame timber kitchens and feature units, meticulously crafted to meet the aesthetic and functional demands of the 21st century. While embracing timeless, traditional interior characteristics, 1909 also includes modern designs, ensuring we complement both classic and contemporary homes. 1909 adapts to any style, delivering a perfect blend of heritage and modernity.

[www.1909kitchens.co.uk](http://www.1909kitchens.co.uk)



*Range and colour*  
Ovolo painted in Carbon.





## *Our Collection*

- 23  
Ovolo
- 37  
Ovolo True Curve
- 55  
Shaker
- 81  
Half Pencil & Scalloped  
Shaker
- 95  
Georgian Shaker
- 109  
Quarter Round Linear  
Shaker
- 113  
Slab
- 143  
Slab Outline

## *Feature Units*

- 162  
The Bi-fold Pantry
- 167  
The Pantry
- 170  
The Walk-in Pantry
- 175  
The Drinks Cabinet
- 178  
The Boot Room
- 182  
Utility
- 187  
Dresser Units  
& Sideboards

---

## *The Finer Details*

- 200  
1909 Door Styles
- 203  
Slab Outline
- 204  
Paint Palette
- 217  
Worksurfaces
- 225  
Handles
- 235  
Storage
- 253  
Our Retailers





HOME & COLONIAL STORES

ALSO PART OF NORTH ROAD

CHERRY TREE

TONS

*It's not just our name,  
it's the beginning of our story.*

Having started life over a 100 years ago, as a family-run business in County Durham, we've successfully established ourselves as one of the finest independent kitchen specialists in the UK.

1909 is a British brand and as such, is committed to servicing the ethos and qualities of great design, skilled craftsmanship, exceptional attention to detail and outstanding service. It is a distinctive collection that has developed organically, embracing natural materials, practicality, durability and style, whilst being wholly accessible and adaptable to any interior design approach.

Combining decades of experience and innovation, with extensive research and design by our in-house team, the 1909 collection offers meticulously crafted, high quality kitchens through our growing family of local specialists, to create dream spaces for families across the UK, for generations to come.







## *Balancing traditional detailing & craftsmanship, with modern manufacturing technology.*

Using modern manufacturing techniques, our 1909 collection recreates the authentic styling, quality, and proportions of period furniture, with functionality that's perfectly tailored to 21st century life.

With a dedicated team of experienced craftsmen, each element of a 1909 timber kitchen is expertly constructed - from the intricacy of our door beading, down to the superior durability of our dovetail drawer joints, to ensure a beautiful yet meticulous attention to detail is preserved.

And, with our own industry leading, state-of-the-art joinery and paint facilities, our passionate team are on hand every step of the way, giving peace of mind that all our kitchens are created to only the highest of standards.

When you choose 1909, you choose uncompromising quality.



# Our Collection

---

*Whilst each 1909 door style is different, there are intrinsic parallels which run throughout: quality, meticulous attention to detail and a timeless, quintessentially British feel, all ensuring an abundance of possibilities can be created to suit you and your home.*



## Ovolo

Ovolo; where intricate frame detailing meets a classic Shaker, offering an elegant twist on a timeless style.



## Shaker

An enduring familiar look with perennial beauty, that works well within a traditional or modern home.





## Half Pencil & Scalloped Shaker

The most intricately detailed of our door styles, Half Pencil & Scalloped Shaker brings elegant beading to the timeless shaker design.





## Georgian Shaker

Carefully combining classical styling with embellished detailing,  
our Georgian Shaker is truly graceful.



## Quarter Round Shaker

Our Quarter Round beading brings a subtle and endearing softness to the classic Shaker profile.



## Slab

Slab combines a contemporary, clean, linear design with a traditional in-frame look, for a sleek and sophisticated aesthetic.



## Slab Portal

Enhances the visual flow of your kitchen, catching eyes with its unique yet minimalistic design.





## Slab Extended Channel

Offers a bold, ultra-modern design, combining sleek aesthetics with practical functionality for a truly distinctive handle option.



# Ovolo

---

*Ovolo; where intricate frame  
detailing meets a classic  
Shaker, offering an elegant  
twist on a timeless style.*







## Ovolo

The overall aesthetic of this kitchen complements the intricate frame detailing of our Ovolo door, combining elegant wall panelling, moulded plinth and a herringbone timber floor to exude refinement. Inspired by a 19th Century colour palette, this scheme brings together a collection of soft and deep greys for a welcoming atmosphere.

As the social hub of the house, the kitchen's practical working areas coincide perfectly with a bright and airy dining space. Central to the design is a large statement island, providing an abundance of storage space, tiered worksurface zones for efficient food preparation, and a breakfast bar, offering the perfect place to enjoy a morning coffee.





*Range and colour*  
Ovolo painted in Silver Grey, Dove Grey  
& Slate.

*Worksurface*  
Strata Quartz Absolute Marbled White and  
Strata Granite Azul Aran worksurfaces  
with Prime Oak timber bench.





An End Grain timber worksurface functions as an integrated chopping board in the central island, combining beauty and functionality. Sitting alongside this, the sumptuous Strata Azul Aran Granite worksurface features waterfall edging to complement the elegance of our Ovolo door.





Kesseböhmer Convoy Larder



*Range and colour*

Ovolo painted in Cashmere, Porcelain & Truffle.

*Worksurface*

Strata Quartz Marbled White, Strata Quartz Perlatino worksurface & Prime Oak timber bench.









A truly tailored kitchen maximises every inch to provide optimum functionality. Integrating a chopping board and tray set into kitchen cabinetry is a great way to reduce workspace clutter whilst keeping practical pieces close to hand.



*Range and colour*

Ovolo painted in Cashmere,  
Porcelain & Truffle.

*Worksurface*

Strata Quartz Marbled White,  
Strata Quartz Perlato  
worksurface & Prime Oak  
timber bench.











## Ovolo True Curve

With its rounded, sleek design, True Curve serves the growing trend for those seeking to add warmer and more inviting elements into their interiors. Meticulously crafted and perfectly shaped, the fluid curves of the cabinet doors blend seamlessly, creating a striking, rounded island-end feature.

This elegant design enhances the room's aesthetic while offering a refined, functional area for entertaining family and friends, perfectly blending style with purpose. With its understated elegance and thoughtful details, True Curve transforms the kitchen into a welcoming haven where form and function are beautifully balanced to create a timeless, inviting ambience.







*Range and colour*  
Ovolo painted in Regiment  
& Copse Green.

*Worksurface*  
Strata Arabieto Bianco & Arabieto  
Noir worksurface.





True Curve features a single curved cabinet door for seamless fluidity. Pair two together for a statement barrel feature to command the attention of any room. And, with an integrated chopping board design in Natural Oak or Walnut, the True Curve door style can help create functional zoning in your kitchen layout.











## Real Homes

---

*Sarah and Adrian chose an  
Ovolo door to bring a timeless  
elegance to this modern,  
country-style kitchen design.*

OVOLO, CHARCOAL & DOVE GREY

*Cumbria*

*Range and colour*  
Ovolo painted in Charcoal and Dove Grey













## Real Homes

---

*Painted in delicate Dove Grey, the calming aesthetic of this kitchen, designed by one of our independent specialist retailers Wilson Drummond, complements the elegant frame detailing of our Ovolo door.*

OVOLO, DOVE GREY

*North Yorkshire*

*Range and colour*  
Ovolo painted in Dove Grey















# Shaker

---

*An enduring familiar look  
with perennial beauty, that  
works well within a traditional  
or modern home.*





## Shaker

Our in-frame Shaker door is a timeless classic, with versatile simplicity that makes it a charming staple for any traditional or contemporary home. Shown here in Storm Blue and with a welcoming country-style aesthetic, the design uses square feature posts throughout to create a free-standing look. This kitchen also maximises space perfectly, combining practical storage, attractive feature cabinetry and an exposed peninsular with breakfast bar seating. The original mantel creates a natural framework to host the hob, as well as utilising the surround for additional hanging storage space.





*Range and colour*  
Shaker painted in Storm Blue.

*Worksurface*  
Strata Quartz Carrara Gioia &  
Prime Oak Timber worksurfaces.









Open and hidden storage work in unison to optimise functionality in this design, with a Kesseböhmer LeMans corner solution, illuminated open cabinetry shelving, and the true star of the show, a stand-alone glazed dresser unit that creates an undeniable storage statement.









*Range and colour*  
Shaker painted in Putty.

*Worksurface*  
Strata Quartz Carrara  
Gioia worksurface.



This kitchen takes on a completely different feel in a muted grey palette, combining our elegant Putty shade with complementing handles and butt hinges.

All cabinet contents become easily visible and accessible with the Kesseböhmer Dispensa base pull-out.









*Range and colour*  
Shaker painted in Putty.

*Worksurface*  
Strata Quartz Carrara Gioia  
worksurface.







# Real Homes

---

*This family kitchen demonstrates  
how the versatile beauty of our  
timeless Shaker door allows it to  
work equally well when paired with  
a fun, contemporary colour palette.*

SHAKER, HARTFORTH BLUE  
AND DRY ROSE

*Northumberland*



*Range and colour*  
Shaker painted in Hartforth Blue and Dry Rose

















*Range and colour*  
Shaker painted in Putty













# Half Pencil & Scalloped Shaker

---

*The most intricately detailed  
of our door styles, Half Pencil &  
Scalloped brings elegant beading  
to the timeless Shaker design.*







## Half Pencil & Scalloped Shaker

The detailed Half Pencil & Scalloped design blends beautifully into this characterful period kitchen and adjoining boot room. A distinguished palette of bold Charcoal, soft Partridge Grey and Chalk creates a depth in the large footprint and perfectly complements the natural wood tones used in the flooring and worktops of the focal island. A moulded plinth and a traditional cornice add to the classic detailing of this quintessentially British design.





*Range and colour*

Half Pencil & Scalloped painted in  
Charcoal, Partridge Grey & Chalk.

*Worksurface*

Oak End Grain timber worksurfaces.





This practical space promotes ease and efficiency when preparing food, with an integrated island chopping board conveniently opposite the hob and oven. A dramatic feature mantel frames the cooking appliances, creating a clearly designated culinary zone and an instant focal point in the room. With breakfast bar seating and a herb and champagne trough, the central island is the ideal social hub for entertaining, making this kitchen a truly multi-functional space.

With a nod to period style, an adjoining boot room continues the intricate detailing of our Half Pencil & Scalloped door through to another practical living space, offering a dedicated storage area for coats and shoes and including dovetail drawers for clever under-seating storage.









## Real Homes

---

*The ornate detailing of our  
Half Pencil & Scalloped door  
was perfect for Tamara and  
Martin's vision for a beautifully  
decadent kitchen design.*

HALF PENCIL & SCALLOPED SHAKER,  
COPSE GREEN

*Glasgow*





*Range and colour*  
Half Pencil & Scalloped Shaker painted in Copse Green















# Georgian Shaker

---

*Carefully combining classical  
styling with embellished  
detailing, our Georgian Shaker  
is truly graceful.*





## Georgian Shaker

The delicate embellishment of our Georgian Shaker lends itself perfectly to this traditional kitchen in a beautifully restored home. The kitchen has been sympathetically designed to blend seamlessly with the original features of the room, such as the sash windows and beams, including the use of square feature posts throughout to create a classical free-standing look. Perfectly aligned with everyday life, the space merges a working kitchen with a dedicated dining area, ensuring this functional room truly is the heart of the home.





*Range and colour*  
Georgian Shaker, painted  
in Dove Grey & Dust Grey.

*Worksurface*  
Caesarstone Rugged  
Concrete worksurface.









Demonstrating the importance of cleverly considered design, whilst highlighting the natural features and proportions of the room, this beautifully ornate kitchen features a mix of cup, knob and latch handles on striking painted cabinetry.











*Range and colour*  
Georgian Shaker, painted  
in Dove Grey & Dust Grey.

*Worksurface*  
Caesarstone Rugged  
Concrete worksurface.



The footprint has been perfectly optimised through clever storage solutions, such as the Kesseböhmer LeMans corner unit, and prominent floor-to-ceiling cabinets. A stunning walk-in pantry offers even more storage for kitchen essentials, in an aesthetic that truly suits the traditional character of the property.



Kesseböhmer LeMans  
shown in Chrome Arena











*Range and colour*  
Georgian Shaker, painted  
in Dove Grey & Dust Grey.

*Worksurface*  
Caesarstone Rugged  
Concrete worksurface.



# Quarter Round Linear Shaker

---

*Our Quarter Round beading brings  
a subtle and endearing softness  
to the classic Shaker profile.*





# Quarter Round Linear Shaker

This simple and functional style shows the subtle variations of our 1909 collection. 'Quarter of a round' beading brings an endearing softness to the classic Shaker profile, complementing the delicate Dove Grey painted finish in this kitchen perfectly. Combining a mix of Chrome cup and knob handles, classic butt hinges and a Belfast sink, the kitchen embraces the warming farmhouse look, creating a homely environment which suits the character of the room perfectly.





# Slab

---

*Slab combines a contemporary,  
linear design with a sophisticated  
in-frame look, for a sleek and  
clean aesthetic.*







## Slab

The seamless form of our sleek, modern slab door sits beautifully within this bright and airy open-plan, kitchen-living space, creating a serene setting for cooking and relaxing. With a layout that's designed to work hard, the kitchen flaunts a multi-functional central island with breakfast bar seating, an embedded appliance bank that conceals a clever pull-out larder, and an abundance of workspace, perfect for any keen cook. A gentle colour palette of Cadet Blue and Dove Grey aligns with the clean simplicity of Slab to enhance the calming atmosphere, with striking metro tiling and a pale, Neolith Calcatta Silk worksurface offering echoes of a vintage interior.







*Range and colour*  
Slab painted in Cadet  
& Dove Grey.

*Worksurface*  
Neolith Calacatta Silk and Neolith  
Zaha Stone worksurfaces.







Featuring a bespoke bookshelf for displaying cookbooks and magazines, and an integrated towel rail concealed beneath the breakfast bar, this central kitchen island is truly tailored to maximise space and provide optimum functionality.

Kesseböhmer Konfigure inserts beautifully compliment modern drawers, and are endlessly customisable for storing cutlery, utensils and spices.





Kesseböhmer Dispensa Larder  
shown in Anthracite Arena Style



*Range and colour*  
Slab painted in Cadet  
& Dove Grey.

*Worksurface*  
Neolith Calacatta Silk and Neolith  
Zaha Stone worksurfaces.





Kesseböhmer  
YouK shelving



*The simplistic beauty of our  
in-frame slab door allows it to sit  
perfectly in any style of home*





The contemporary Slab takes on a whole new striking look in this L-shaped, compact kitchen design, shown in our beautifully deep and dramatic Copse Green. With Knurled Matt-Black handles, a matt-black tap, and a Kesseböhmer YouK exposed modular shelving unit, the linear design embraces an industrial aesthetic.





*Range and colour*  
Slab painted in Copse Green.

*Workspace*  
Dekton Lunar worksurface.







An open peninsula end with a free-standing look contributes to the unstructured, industrial style of this kitchen. A multi-functional feature, the peninsula can act as an attractive divide to section off an open-plan layout, whilst also providing open-slat shelving for easily accessible storage, and a drawer to keep kitchen essentials close to hand.









*Range and colour*  
Slab painted in Dry Rose & Copse Green













# Real Homes

---

*Slab takes on a dramatic yet refined look in this beautifully bright, open-plan kitchen.*

SLAB, COPSE GREEN

*London*





*Range and colour*  
Slab painted in Copse Green













*Range*  
Slab Outline Portal, painted in Ives Blue.



# Slab Outline

---

*Slab Outline features a unique, bespoke integrated handle that elevates the sleek and clean aesthetic of your slab kitchen.*

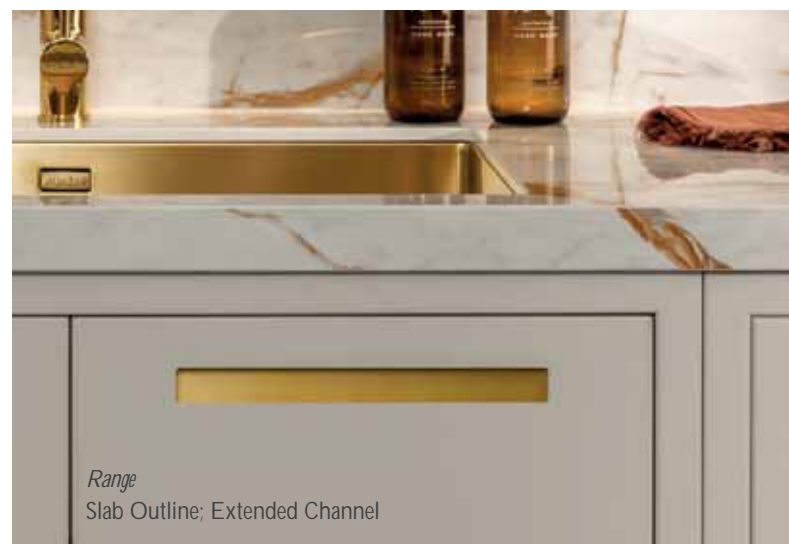


*Range*  
Slab Outline; Portal



## Slab Outline

The Outline Collection introduces a refined, bespoke integrated handle that seamlessly blends into the sleek lines of your slab kitchen, enhancing its modern appeal. This distinctive feature not only brings a touch of sophistication but also emphasises functionality with its ergonomic design, making it both stylish and practical. The handle's subtle integration preserves the clean, uninterrupted surfaces of the cabinetry, creating a streamlined, minimalist look that aligns perfectly with contemporary tastes. With Slab Outline, every detail is thoughtfully crafted to elevate your kitchen, adding an understated elegance that transforms the space into a modern, inviting focal point in the home.









*Range and colour*  
Slab Outline painted  
in Truffle & Putty.

*Worksurface*  
Dekton Laurent worksurface.





SLAB OUTLINE

## Portal

The timeless, circular design of Portal presents an elegant, soft handle option that pairs beautifully with the modern, linear design of our Slab door. Its distinctive round backplate evokes a touch of eclectic and retro sophistication.





*Range and colour*  
Slab Outline painted  
in Ives Blue.

*Worksurface*  
Sensa Ice Blue worksurface.







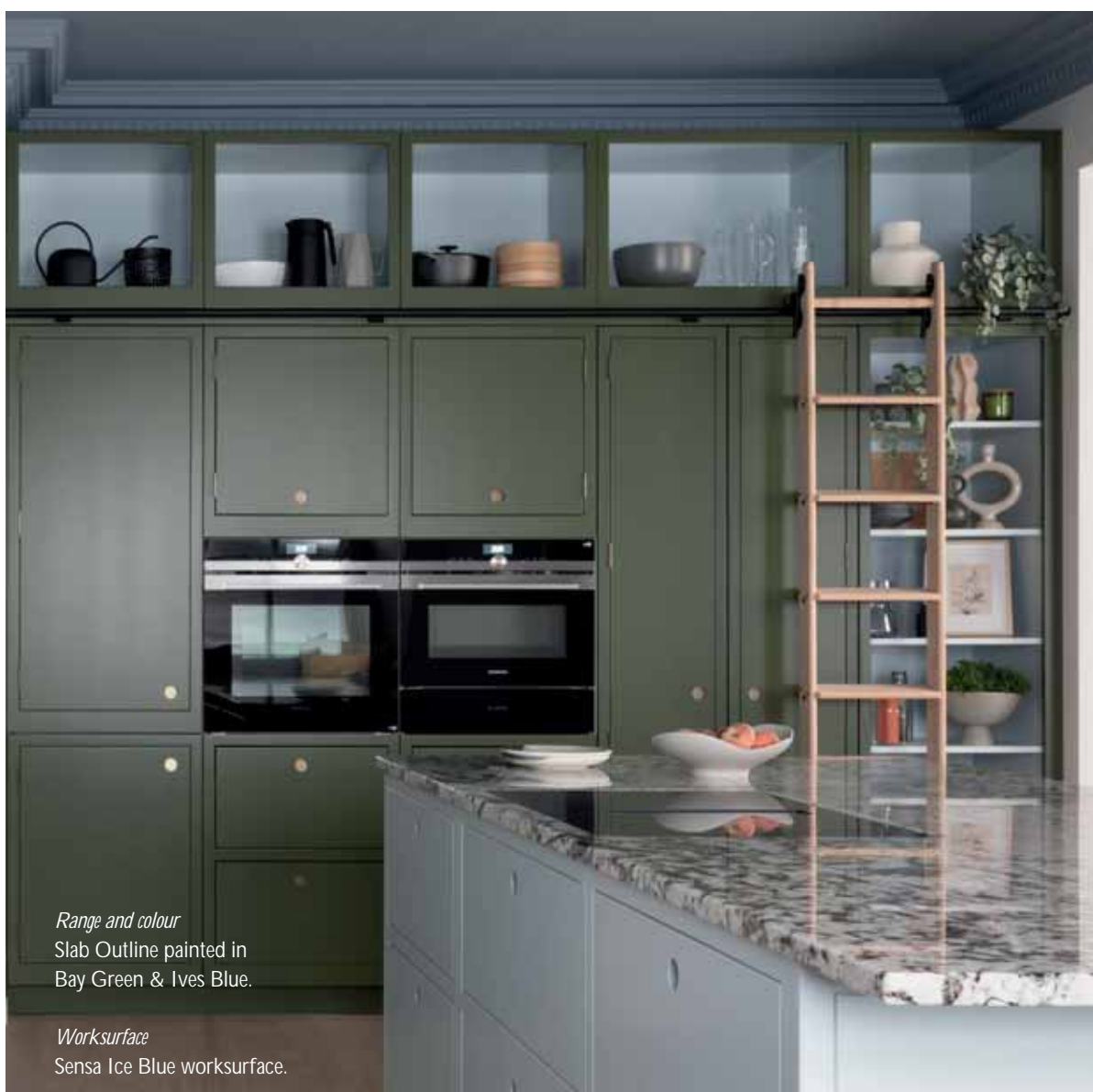
*Range and colour*  
Slab Outline painted  
in Ives Blue.



SLAB OUTLINE

## Portal

Designed to make a subtle statement, Portal enhances the visual flow of the kitchen, drawing the eye with its unique design. Crafted with precision, this handle seamlessly balances form and function, adding character while ensuring a comfortable, practical experience.



*Range and colour*  
Slab Outline painted in  
Bay Green & Ives Blue.

*Worksurface*  
Sensa Ice Blue worksurface.







*Range and colour*  
Slab Outline painted  
in Taupe Grey.

*Worksurface*  
Dekton Awake worksurface.







## SLAB OUTLINE

# Extended Channel

Extended channel's bold, geometric shape creates a beautifully sleek, ultra-modern appearance for a functional yet adventurous handle, perfectly suited with the sophisticated in-frame design of our Slab door.





*Range and colour*  
Slab Outline painted  
in Taupe Grey.

*Worksurface*  
Dekton Awake worksurface.







# Feature Units

---

*At 1909, we understand it's the details that make your home special- whether it's a statement pantry unit, a multi-functional utility, or an adjoining boot room. It's the tailored features that create a truly individual space.*

# The Bi-fold Pantry

A true 'wow factor' feature, this large bi-fold pantry mirrors the timeless design of a traditional freestanding dresser. Creating the perfect home for your morning essentials, an integrated coffee machine, or an ever-growing collection of cookery books, the pantry subtly conceals your kitchen essentials neatly away behind beautiful bi-folding doors. Open or closed, your pantry will command the attention of the room.



Kesseböhmer Base Pullout  
shown in Chrome Arena Style





*Range and colour*  
Ovolo painted in Silver Grey.

*Worksurface*  
Strata Quartz Absolute  
Marbled White, Strata Granite  
Azul Aran worksurfaces.









# The Pantry

Equal in beauty and practicality, the humble pantry is a cupboard with a difference, a timeless feature with an abundance of possibilities. Shown here integrated into a run of beautiful Georgian units, this butler-style pantry opens to reveal stunning Washed Oak internals, including pantry door racks, spacious shelving and dovetail drawers, all illuminated by warming LED lighting for the perfect finishing touch.





*Range and colour*  
Georgian Shaker, painted  
in Dust Grey.

*Worksurface*  
Caesarstone Rugged  
Concrete worksurface.





# The Walk-in Pantry

Traditionally a room between the kitchen and dining area to store food, a walk-in pantry can transform an alcove or corner of your kitchen into the ultimate storage space. Shown here in our Georgian design, the walk-in pantry creates a classic statement, featuring elegant cabinetry that flows through from the main working kitchen area, and beautiful open shelving that truly maximises storage potential from floor-to-ceiling.



Kesseböhmer LeMans  
shown in Chrome Arena









*Range and colour*  
Georgian Shaker, painted  
in Dove Grey & Dust Grey.

*Worksurface*  
Caesarstone Rugged  
Concrete worksurface.







# The Drinks Cabinet

---

*As the saying goes, it's what's on the inside that counts, but in the case of our Drinks Cabinet, we'd have to argue that what's on the outside is pretty special too.*

The 1909 Drinks Cabinet is our exquisitely crafted, free-standing feature cabinet- a statement piece of furniture that will bring an element of luxury to any night in. Featuring a three panel door as part of our in-frame Shaker and Ovolo styles, and shown here with beautiful Georgian beading, the cabinet design gives a nod to heritage style and demands the attention of the room with its traditional sophistication.

Behind the doors of the Drinks Cabinet is a treasure trove of tailored storage. With Cross Bottle Holders, open-shelving, dovetail drawers, an integrated chopping board and serving tray, and pantry door racks for displaying your favourite mixers, the cabinet offers you a special place for each and every one of your home bar essentials.





*Range and colour*  
Georgian Ovolo painted  
in Dry Rose.

*Worksurface*  
Silestone Lusso.

# The Boot Room

Conventionally a room to transition from outdoors to indoors, a boot room is the perfect way to continue your 1909 design through to another area of the home, creating a space that's an equal balance of beauty and practicality, with a nod to classical style. Featuring a bench with integrated shoe shelving, open and closed storage for outdoor essentials, coat and umbrella hooks, and a clever laundry cabinet, this multi-functional boot room is designed to work hard and keep up with the hustle and bustle of family life.









*Range and colour*  
Shaker painted in Cashmere.



A boot room is the perfect place to feature a laundry cabinet, to store away household items such as your ironing board and iron, that don't necessarily have a dedicated space in your home. The tall-door design of the laundry cabinet allows the unit to maximise space in even the smallest of rooms, with a selection of different sized shelves for an abundance of storage possibilities.



# The Utility Room

Often thought of as an extension of your kitchen, we believe this multi-functional space deserves the same careful consideration and style as your main kitchen design. If your home has the space, a tailored 1909 utility is the perfect cove for hiding away bulky appliances, like a washing machine and tumble dryer, and other household items you don't want to clutter up your main kitchen area. And, with an integrated sink, a utility room is great for containing messy jobs, such as cleaning muddy boots, and keeping them separate from your food preparation and dining areas.









*Range and colour*  
Quarter Round Shaker  
painted in Hartforth Blue.

*Worksurface*  
Strata Quartz Mayville  
Concrete worksurface.



A multi-compartment, pull-out laundry basket and accompanying clothes rail are ideal for storing and organising your family's washing. And, by situating these next to your washing machine and tumble dryer, you have a ready-made, designated laundry area- helping to make the mundane, everyday task easier for the whole family.









## Dresser Units

Taking inspiration from the classic Welsh dresser that once adorned only the family's 'best china', our beautifully crafted stand-alone dresser unit with open shelving holds all the traditional charm of its predecessor, with the functionality and versatility to make it the perfect addition to any kitchen, dining room, living space, or even garden room, as demonstrated here.

Painted in our rich Copse Green, this elegant dresser blends timeless charm with practical functionality. Featuring generous storage and striking fluted glass panels, it offers the perfect way to showcase your favourite kitchenware, decorative pieces, or cherished collections. The warm wood interior beautifully offsets the deep green finish, adding a touch of sophistication and personality to any room.

### *Range and colour*

Ovolo painted in Copse Green.

### *Worksurface*

Strata Arabieto Noir worksurface.





*Range and colour*  
Ovolo painted in Carbon.

*Worksurface*  
Strata Quartz Callacatta  
Silver worksurface.

*Range and colour*  
Shaker painted  
in Regents Green.

*Worksurface*  
Strata Quartz Pietra Verde  
worksurface.







## Sideboards

Our sideboard units are perfectly suited to make a beautiful statement in an entrance hall, living area or dining room, taking on a refined, modern-classic aesthetic. Available in our 35 unique painted colours, and with any of our 1909 worksurfaces, the sideboard can be truly tailored to reflect your individual style and the character of your home.

Shown here in our regal Regents Green and paired with a striking Strata Quartz Pietra Verde worksurface with green accents, this sideboard displays how square feature posts can be used to give the piece a homely, free-standing look.

*Range and colour*  
Shaker painted  
in Regents Green.

*Worksurface*  
Strata Quartz Pietra Verde  
worksurface.











*Range and colour*  
Slab Outline painted  
in Ives Blue.

*(Right) Range and colour  
Slab Outline painted  
in Putty.*











# 1909 Door Styles

Whilst each 1909 door style is different, presenting a wealth of design possibilities, there are intrinsic parallels which run throughout: quality, meticulous attention to detail and a timeless, quintessentially British feel.

Our Classic Shaker and intricate Ovolo door styles can be complemented by the addition of beaded detailing. Sitting neatly into the frame of the door, our beading comes in four options. Choose from the decorative Half Pencil & Scalloped style, elegant Georgian, or the simple Quarter Round (two or four sided), to give your kitchen a tailored, individual look.

Alternatively, our Slab door style offers a simple and clean choice for those looking for a more modern aesthetic. For added versatility, our new Slab Outline range features three integrated handle options, complemented by a curated selection of backplates to suit your preferences.

Much of 1909's beauty comes from its crisp, smooth painted finish. Due to the traditional flush joint construction techniques of our furniture and the natural properties of real living timber, small signs of movement may appear as the kitchen ages and settles into its new home. This is common with many other types of furniture and any 'whisper lines' that do appear can simply be overpainted.

Please ask your 1909 specialist retailer if you have any queries on maintaining your kitchen over time and they will be happy to help.



*Shaker and Ovolo Additional Beading Options -*



Half Pencil & Scalloped



Quarter Round Linear  
2 sided



Georgian



Quarter Round  
4 sided



*Outline integrated handle options -*



Portal



Channel



Extended Channel





# Slab Outline

Slab Outline brings a sophisticated touch to modern kitchen design with its bespoke integrated handle, perfectly complementing the smooth, seamless lines of our slab range. This unique feature enhances both style and practicality, offering a design that balances modern aesthetics with everyday functionality.

The discreetly integrated handle accentuates the door's clean, unbroken surfaces, delivering a refined, minimalist appearance that resonates with contemporary design. Every element of Slab Outline is meticulously designed to elevate your kitchen, infusing it with a subtle elegance that transforms it into a stylish and welcoming centre piece of your home.

## OUTLINE HANDLE OPTIONS



Portal



Channel



Extended Channel

## BACKPLATE OPTIONS

*Timber backplates - 4mm*



Oak



Walnut

*Painted backplates - 4mm*



Colour Matched  
To Frontal



Carbon  
Smooth Finish

*Metallic backplates - 2mm*



Antique Bronze  
Effect



Aged Brass



Bright Copper



Brushed Brass



Stainless Steel

## Paint Palette

The 1909 collection can be painted in a choice of 35 exquisite colours, each carefully created by industry-leading designers and equally suited to traditional or contemporary homes.

From muted neutrals and profound monochromes, to vibrant colours creating a statement to match any mood; there's no need to limit yourself to just one!

Use our paint palette to help turn your kitchen dreams into reality.

Alternatively, our 1909 specialist retailers will be more than happy to suggest inspirational ideas to find your perfect colour.

Please note: Whilst every effort has been made to accurately represent painted colours, actual product colours may vary slightly from colours shown in this brochure. If opting for a dark kitchen, it is worth noting that darker shades can show up fingerprint marks more easily than lighter finishes, however these are easily removed with a soft Microfibre anti-scratch cloth, available from most supermarkets.



# Neutrals

Neutrals are perfect for brightening or bring a calming warmth to a space, and work equally well as stand-alone colours or paired with a complementing shade for a two-tone look.

## *Neutrals*



White



Chalk



Porcelain



Mussel



Taupe Grey



Stone





Chalk



*Slate, Silver Grey and Dove Grey*

# Greys

Ranging from the soft, muted tone of Dove Grey, through to the moody depth of Carbon, our beautiful Grey palette is filled with an array of versatile shades to suit any kitchen style.

## *Greys*



Dove Grey



Silver Grey



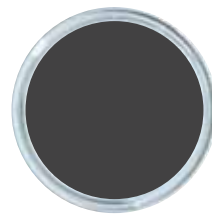
Putty



Dust Grey



Slate



Graphite



Carbon

# Warm Neutrals

From regal reds and deep, earthy tones, to muted hues with soft undertones, our warm neutrals can bring reassuring comfort and refined character to a design.

## *Warm Neutrals*



Cashmere



Dry Rose



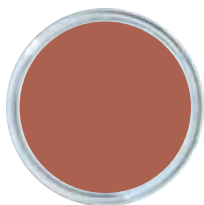
Meadowell



Fawn



Truffle



Pimento



Malbec





Truffle



*Copse Green*

# Greens

With an array of warming Olive Greens and a selection of rich, grounded Forest Greens, our Paint Palette has the perfect shade to suit any taste and kitchen aesthetic.

## *Olive Greens*



Sage



Olive

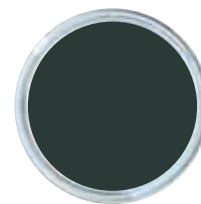
## *Forest Greens*



Regiment



Regents Green



Copse Green

# Blues

Our Blue collection is split into two distinctive tonal palettes, the Ink Blues, which could be described as our true blue shades, and the Green Blues, each with a subtle green undertone. Each unique shade would work perfectly in a stand-alone look, or paired to create a complementary two, or even three, tone aesthetic.

## *Ink Blues*



Ives Blue



Cadet

## *Green Blues*



Partridge Grey



China Blue



Sea Glass



Chalk Blue



Storm Blue



Majestic Teal



Hartforth Blue



Charcoal





*Hartforth Blue*



# Worksurfaces

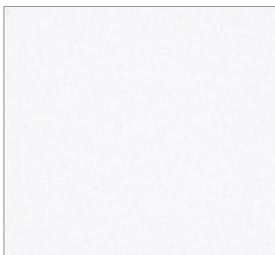
We've scoured the world searching for the very best colours, materials and finishes, to bring you an extensive selection of worksurfaces that complement our 1909 kitchens perfectly.

From granite and timber worktops, to man-made composites, many materials are available in a wide range of finishes to complete any kitchen look, and can be used to add statement splashbacks, panels, or even chopping boards to your design.

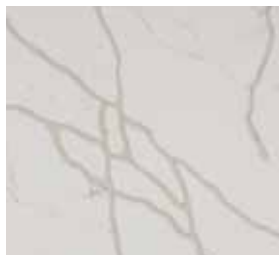
Here is a just a small selection of our materials, so you can get a taste of what our 1909 collection has to offer. To explore our full range of colours and finishes, ask your local 1909 specialist for more information and to request a copy of our supplementary worksurfaces brochure.

# White. *Pure, Veined & Speckled*

From the clean, crisp look of Brilliant White to the dramatic veining of Calacatta Gold, this collection is pure and simple, without pigment and without fuss.



Brilliant White



Strata Calacatta Gold



Dekton Bergen



Ultra HD Khamsin



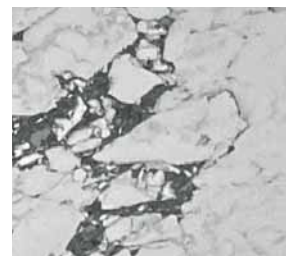
Strata Carrara Gioia



Strata Pietra Icy White



Colonial White Polished



Strata Arabieto Bianco

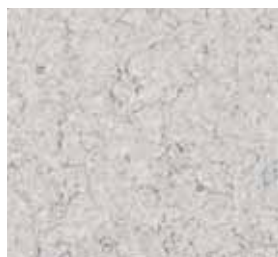


# Neutral. *Pure, Veined & Speckled*

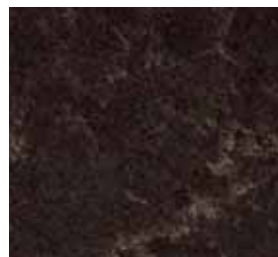
Inspired by the natural world, this palette features a warm and inviting aesthetic, with a collection of rich earthy tones, featuring bold stone grains, translucent crystallisation and refined veining.



Strata Elegant Clay



Strata Hail Storm



Silestone Chateau Brown



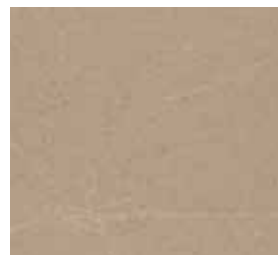
Strata Patagonia



Lundhs Antique



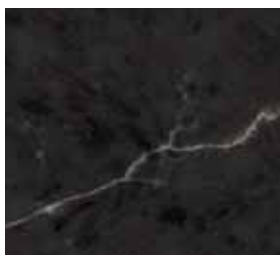
Strata Pietra Auburn



Strata Pietra Taupe

## Grey. *Pure, Veined & Speckled*

When there is need for instant impact without drama, our stunning Grey Collection combines the raw, textural appeal of natural stone surfaces, with the inherent beauty in all their many forms.



Strata Pietra Charcoal



Strata Pietra Silver



Azul Aran Polished



Dekton Laos



Silver Waves Polished



Moon Pearl



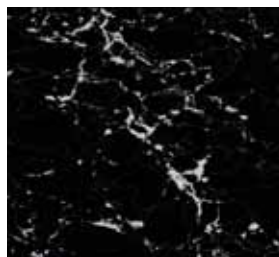
Ultra HD Tempest

# Black. *Pure, Veined & Speckled*

Crisp and contrasting, our Black collection is sleek, dramatic and daring. Be bold, be mysterious and add impact to your kitchen colour scheme with this rich palette of the deepest, darkest shades.



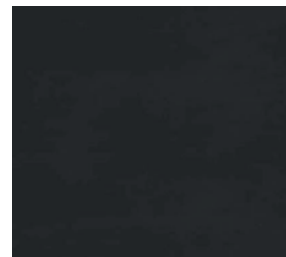
Black Cosmic Leather



Arabieto Noir



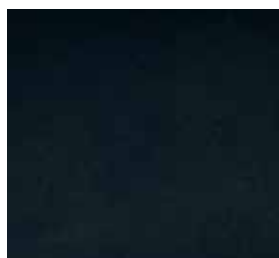
Strata Pietra Verde



Dekton Domoos



Dekton Laurent



Sensa Granite Moak Black



Strata Pietra Carbon

# Industrial Collection

This collection redefines the industrial aesthetic by blending luxe metallics and warmer tones for a softer, more sophisticated style. Choose from striking, bold options or subtle materials to enhance the architectural elements of your space.



Mayville Concrete



Kemble Concrete



Barbican concrete



Trinity Concrete



Dekton Lunar



Dekton Grafite



Dekton Trillium



Strata Balfron Concrete



# Timber Collection

The natural, organic beauty of a wooden worksurface makes it ideally suited to any style- contemporary, classic, or country- timber will bring warmth, calm and character to a room.



Prime Oak Full Stave  
40mm



Iroko Finger Stave  
40mm



Oak End Grain  
60mm



Rustic Oak Full Stave  
40mm



Walnut Finger Stave  
40mm



Strata Oak Finger Stave  
40mm



# Handles

Although small, the handles you choose are mighty when it comes to creating the overall look and feel of your kitchen.

From polished Chrome knobs, to sleek Matt-Black Knurled bars, our charming collection of 1909 handles offers a wide range of finishes and style options, so you can find the perfect design to suit your beautifully tailored kitchen.

Here is just a small selection of the handles available in our 1909 collection. To explore our full selection, visit your local 1909 independent specialist who would be happy to guide you through all available finishes and styles.

# The Chrome Collection

Classic and timeless; our Chrome handles create an elegant statement with an eye-catching, high polished finish.





# The Nickel Collection

The distinctive warm hue and elegant aesthetic of Nickel sets it apart from other finishes.





# The Knurled Collection

With a unique and tactile design, our Knurled Collection produces a distinct industrial look.



# The Black Collection

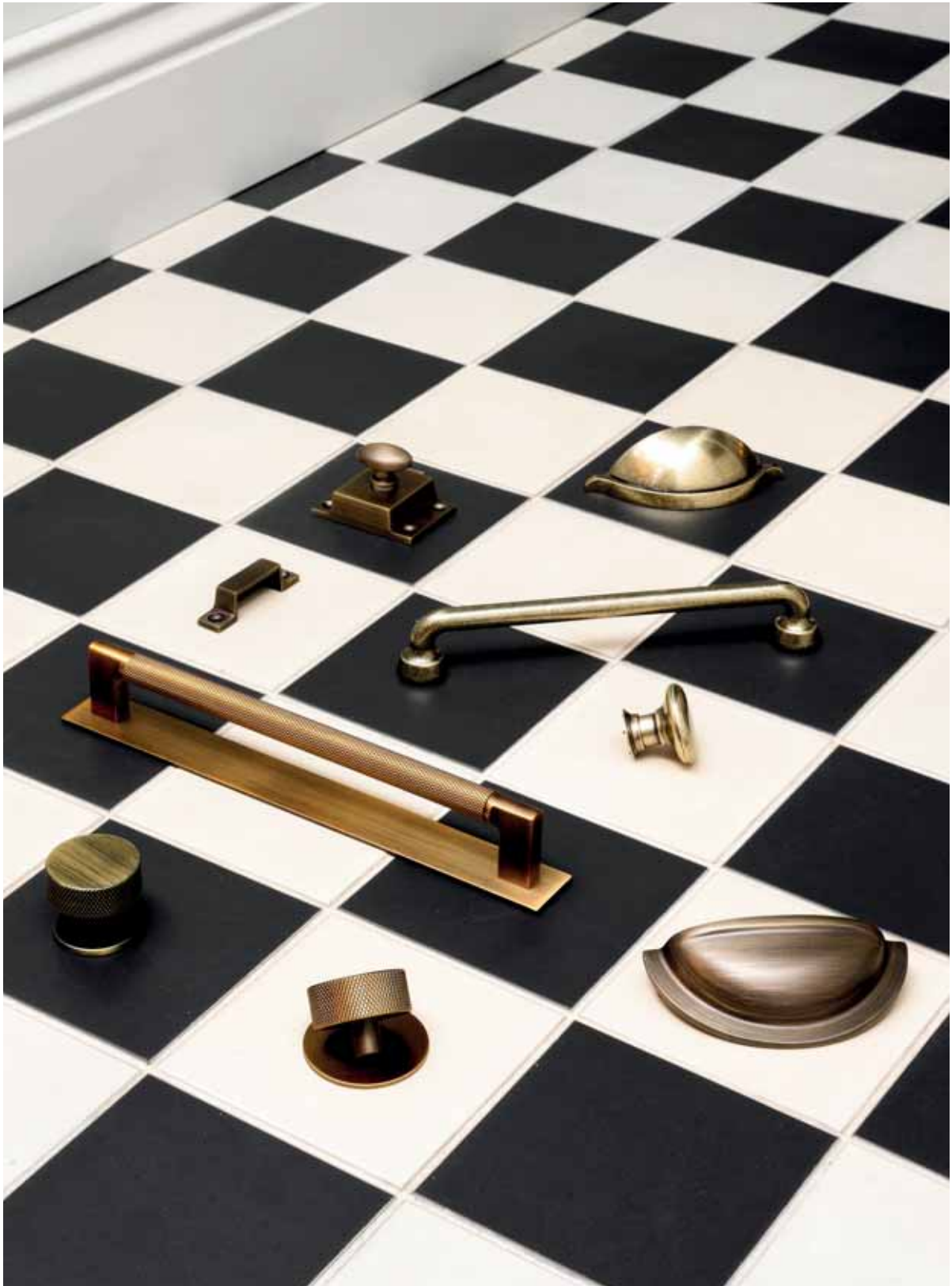
Bold and dramatic; our Black Collection is the perfect choice if you're looking to create a statement with your handles.





# The Antique Bronze Collection

With a naturally aged warmth, our Antique Bronze handles bring a real sense of character and individuality to a kitchen design.



# The Aged Brass Collection

The muted warmth of Aged Brass can beautifully capture traditional period styling or bring drama to a modern setting.



# The Satin Brass Collection

Our bright and elegant Satin Brass Collection brings a luxe feel to any kitchen design.



Kesseböhmer Dispensa Larder  
shown in Chrome Arena





## Just as beautiful on the inside

At least half the pleasure of your kitchen comes from using it – and that means efficiency, with everything in the right place, there at your fingertips. 1909 offers a vast range of smart storage solutions, ensuring that not an inch of your space is wasted, and your kitchen is kept clutter-free. Choose from plentiful pull-out ladders that ensure everything is visible, clever corner solutions that bring the contents of the cupboard out to you, beautiful pantry units that create a storage statement, or spacious drawers with customised partitions, to give everything a designated place.

# Corner Solutions

Are you guilty of having pots and pans that you haven't seen for a while as they're lost to the depths of an awkward corner cupboard? Losing your kitchen essentials in a corner cabinet could be a thing of the past, with the Kesseböhmer LeMans smart storage solution. The innovative curves of the LeMans shelves allow them to smoothly glide from the inside of your corner cupboard, bringing the whole shelf and its contents within easy reach to maximise your kitchen's storage potential.











# Base Units

Our Base Unit Pull-Outs are designed with your kitchen life in mind. Whether you're a keen baker who needs ingredients within reach, an avid cook who loves to use spices and oils, or simply someone who is dreaming of an organised kitchen, our pull-outs ensure your kitchen essentials are always neat, tidy and close to hand.



# Larders

Whatever your kitchen design and layout, we have a larder solution to suit. A larder unit allows you to pull the entire contents of your cupboard out in one smooth motion, giving you a clear view of, and easy access to, all your foodstuffs (even those on the top shelf!). Never again will you find out-of-date ingredients in the depths of your cupboard, saving you money and preventing waste in the long run. The shelves of our larder units can also be adjusted to work around your food items, so should your storage needs change over time, your Larder can change with them.





# Dovetail Drawer Boxes

With the attention to detail you can expect of a 1909 kitchen, our solid timber Dovetail Drawers are expertly crafted to stand the test of time. Designed with traditional dovetail joints for ultimate strength and longevity, our drawers offer exceptional durability while blending beautifully with the elegant character of a 1909 kitchen.





# Orion Grey Drawer Boxes

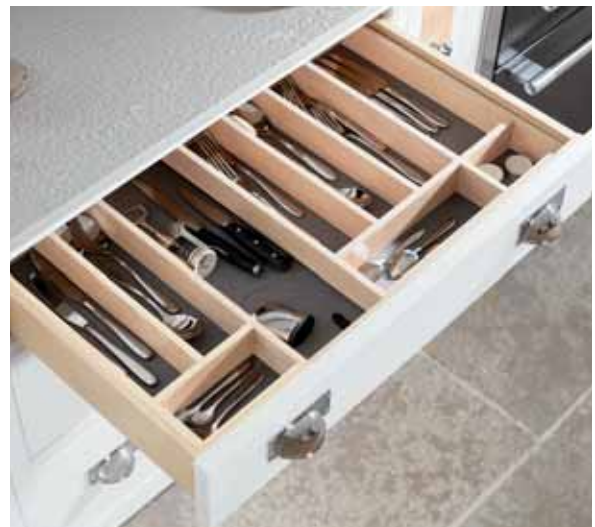
Defined by straight lines that create a sleek, elegant look, our Orion Grey Drawer Boxes offer a contemporary alternative to our classic Dovetail Drawers. Available in a range of drawer heights to suit your storage needs, our Orion Grey Drawers boast a high load capacity, allowing them to store all your heavy kitchen essentials with ease, and without compromising on a feather-light glide.





# Drawer Organisation

Put an end to aimless rummaging with our wide range of superb drawer organisation solutions, allowing you to make the most of your storage space. From cutlery trays and knife blocks, to food storage and plate holders, our cleverly designed and expertly crafted drawer organisation inserts will ensure your kitchen is just as beautiful on the inside, as it is on the outside.











## Waste and Utility

Storing and disposing of waste responsibly and efficiently is often an element of kitchen design that homeowners overlook. However unglamorous it may be, every kitchen will need to dispose of waste and store recycling as an everyday task, so we believe it's important that your kitchen can do so, without compromising on style. Our single or multi-compartment pull-out bins (to help you organise recycling materials) are seamlessly integrated into your kitchen cabinet, so any waste is stored away out of sight.

Our multi-compartment units are also multi-functional, as their design allows them to be used as an efficient laundry basket and separator- the perfect accompaniment to a utility room.



# Feature Shelving

Offering a contemporary alternative to closed cabinetry, our feature shelving can transform the look and feel of your kitchen, whilst presenting the perfect opportunity to display your kitchen essentials or decorative pieces. Our Modular Open Units offer you a set, seamless design, or our YouK Wall Storage offers a bespoke solution, allowing you to design a tailored unit to perfectly suit your personal storage requirements. Both options can be specified with boarding to complement your overall kitchen style.









# Great British Design

---

*Now you have explored our expertly  
crafted collections and discovered  
how a 1909 design can transform  
the heart of your home and beyond,  
it's time to take the next step in  
your renovation journey.*



# Your Local Specialists

Right across Britain, our 1909 design specialists would love to talk to you about all the exciting possibilities for your upcoming kitchen transformation. From amazing storage solutions, to creative colour combinations- our network of local retailers have a wealth of industry knowledge to help you design a perfectly tailored kitchen for you and your home.

1909 experts can help you achieve more than you ever thought possible.

Discover your local specialist by visiting [www.1909kitchens.co.uk](http://www.1909kitchens.co.uk) today.











Colour reproduction

We take great care in the photography of the products featured. However, due to variables between photographic and print processes, colours may vary from the actual product supplied. ©Copyright PWS Distributors Ltd.

Please note, images used within this brochure are to give a representation of the brand for marketing purposes only. Internals, finishes and accessories may differ depending on retailer. Please speak to your 1909 specialist to confirm exact product specifications.

February 2025

GREAT BRITISH DESIGN  
SINCE

1909

[www.1909kitchens.co.uk](http://www.1909kitchens.co.uk)